

Apogee 2100

Digital Color Doppler Ultrasound Imaging System

*Your preferred
entry-level Color Doppler*



Shantou Institute of Ultrasonic Instruments Co., Ltd.

HEADQUARTERS:

Shantou Institute of Ultrasonic Instruments Co., Ltd.
Add: No.77, Jinsha Road, Shantou 515041 Guangdong, China
Tel: 86-754-8825 0150 Fax: 86-754-8825 1499
E-mail: siui@siui.com

HONG KONG OFFICE:

Shantou Institute of Ultrasonic Instruments (HK) Co., Ltd.
Add: Room 2101, Tung Chiu Commercial Center
193 Lockhart Road, Wanchai, Hong Kong
Tel: 852-2891 6722 Fax: 852-2891 6723

www.siui.com



SIUI SIUI SIUI



Apogee 2100/EN170228V2.0

SIUI's new Apogee 2100

Limited with budget or dazzled with different choice in the market, doctors who want to have the first Color Ultrasound System now have a good chance to upgrade their modality. SIUI's new Apogee 2100, which is compact designed and transplanted leading imaging technology from high-end models, will be your preferred entry-level Color Doppler System.

Leading imaging technology transplanted from high-end models

• Nanoview

By reducing noises and artifacts, Nanoview is able to present tiny lesions in soften images with distinct tissues and enhanced edge, helping to offer reliable diagnostic results.

• Xbeam

By emitting ultrasonic beams from different angles, XBeam reduces the dependence from receiving angles to create images without compromise.

• Fusion THI

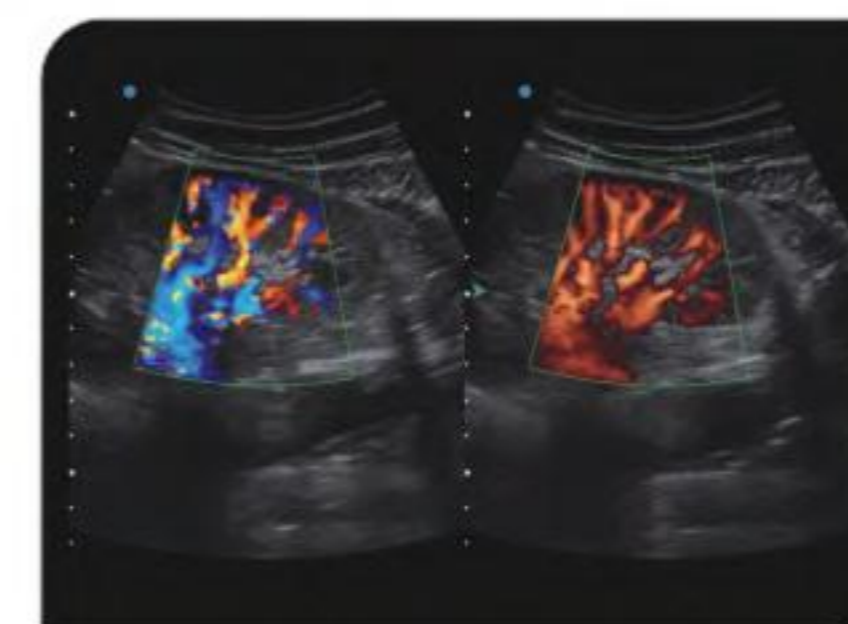
Real-time fusing the information from different frequency bands, Fusion THI implements the broadband transmission and reception of harmonic waves.



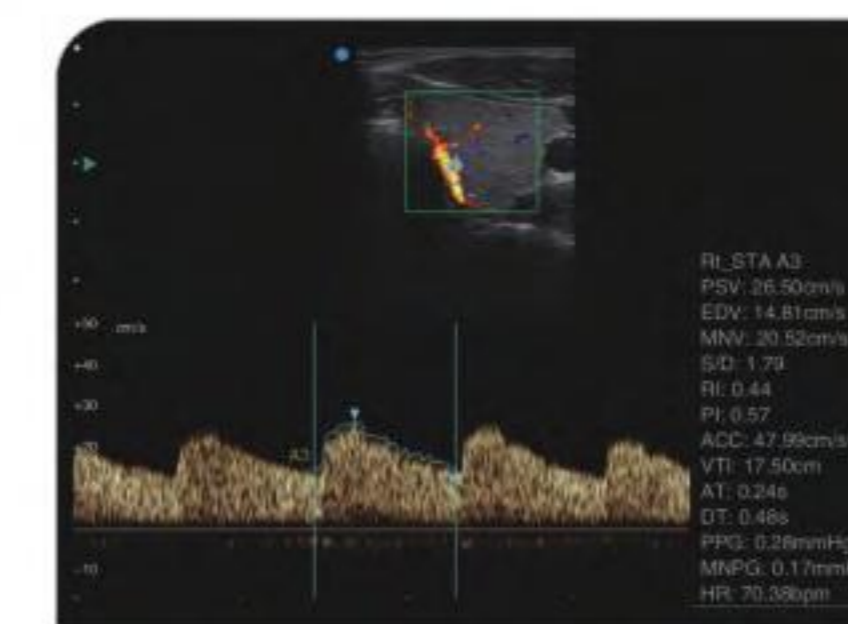
Compact design enables flexibility

- 15-inch LCD monitor with tilting angle
- User-oriented control panel, operate fluently
- Dual probe connectors save probe changing efficiency
- Replaceable Li-ion batteries support 1h continuous scanning

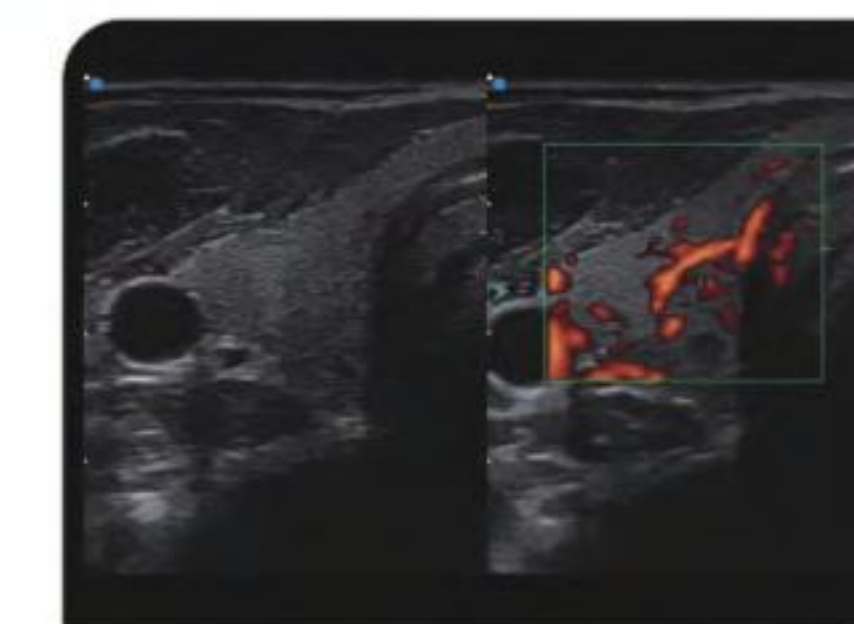
Image Gallery



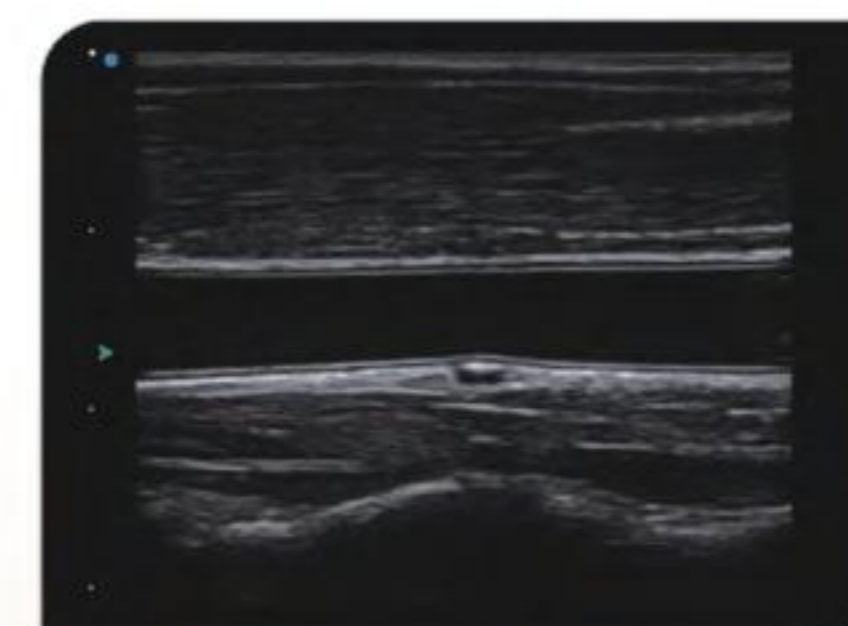
Kidney color mode



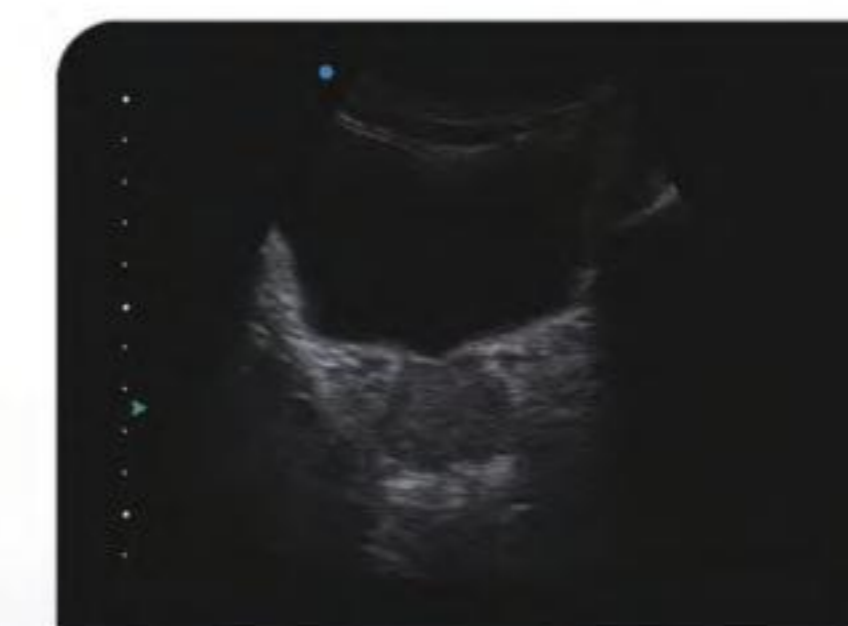
Thyroid PW mode



Thyroid CPA mode



Carotid 2D mode



Prostate 2D mode



Liver-Kidney 2D mode

