

# Apogee 3300 **Neo**

Digital Color Doppler Ultrasound Imaging System

*Color Experience  
With Simplicity*





To meet with doctors' basic needs, SIUI introduces our latest digital color Doppler Apogee 3300 Neo. Together with compact design, abundant application packages and streamlined workflow, now you can experience Color System with simplicity.



## Color experience without clinical compromise

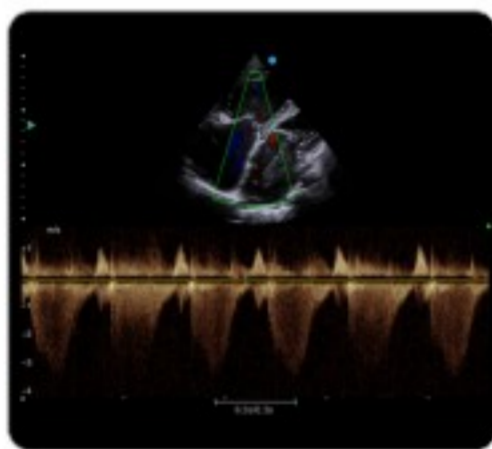
Various diagnosis applications and complete transducer solution support your daily diagnosis without any compromise.

### 4D

With self-owned 4D technology, doctors can be easily achieved 4D image with various processing functions such as rotation, zoom in/out and trim. Moreover, 4D volume probes enable the system to real-time display volumetric information of fetus or organ conveniently and efficiently.



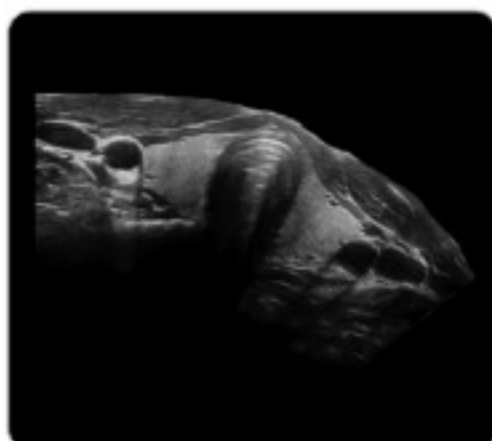
Fetal face



TVR

### Continuous Wave Doppler (CW)

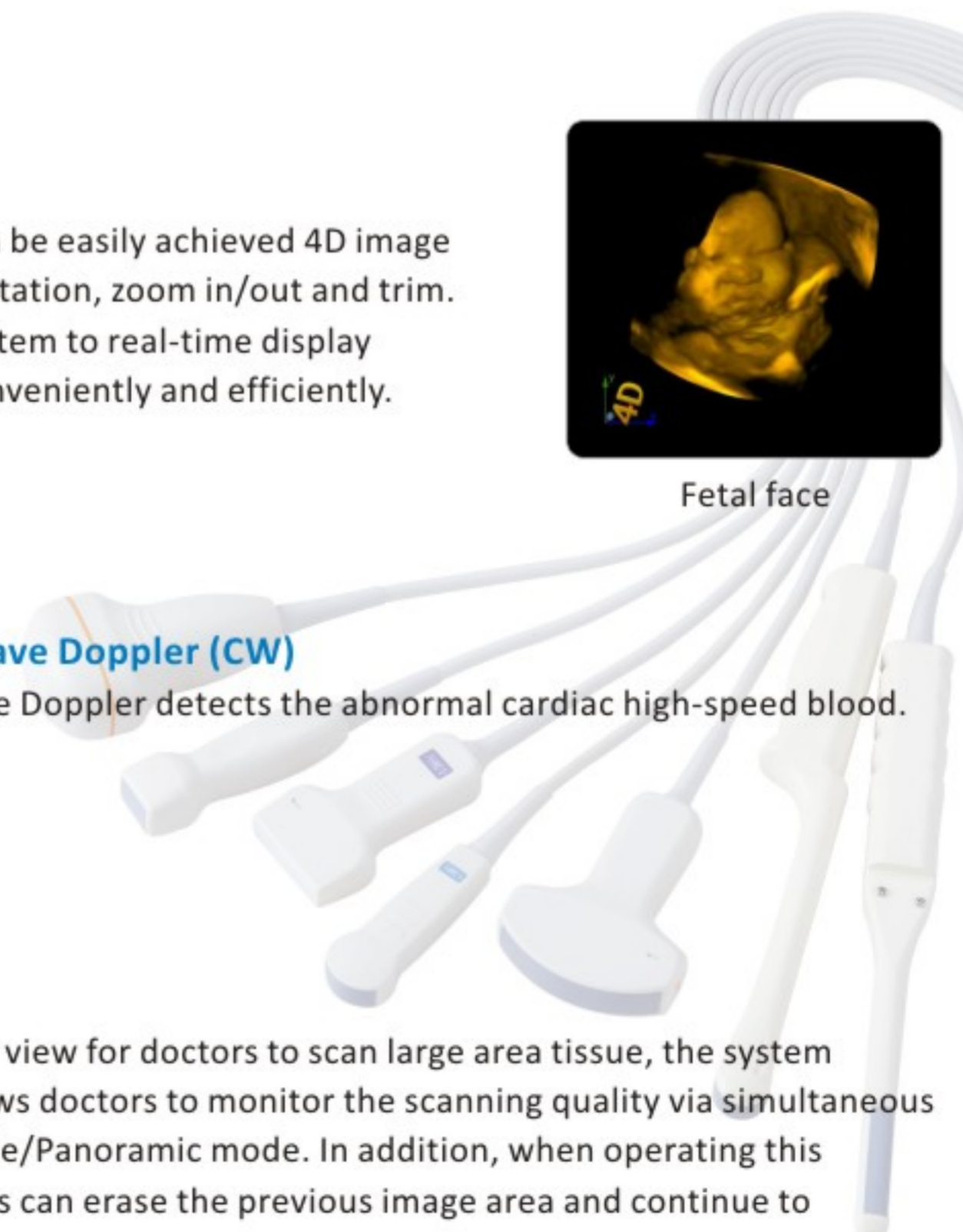
Continuous wave Doppler detects the abnormal cardiac high-speed blood.



Thyroid Panoscope

### Panoscope

Extending wider view for doctors to scan large area tissue, the system particularly allows doctors to monitor the scanning quality via simultaneous display of B mode/Panoramic mode. In addition, when operating this function, doctors can erase the previous image area and continue to generate better panoramic images.



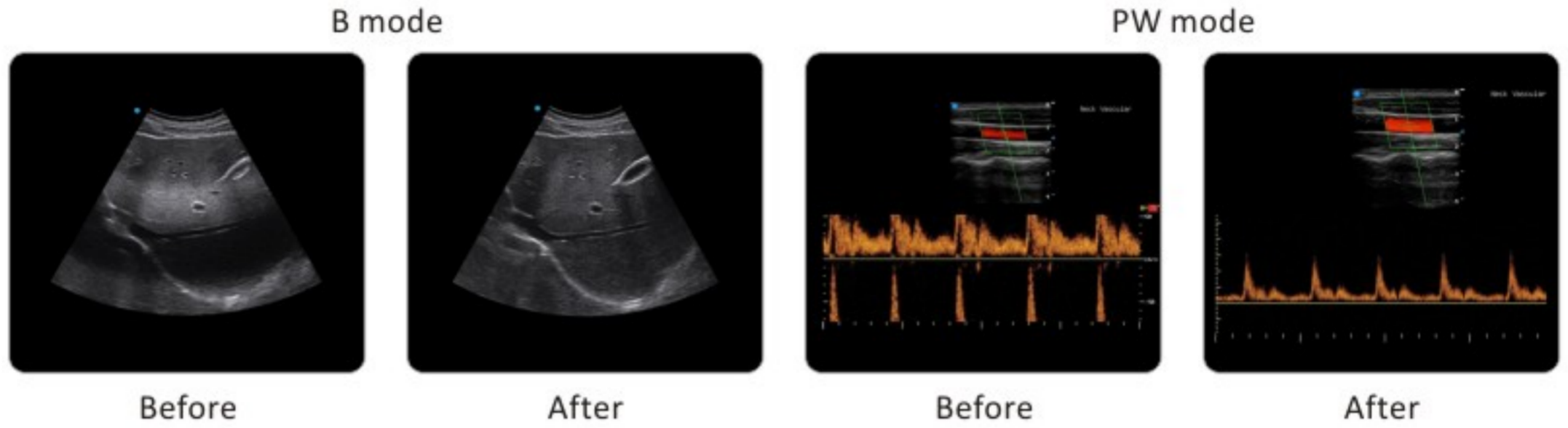


## Simplify routine examination, improve efficiency

Simple and convenient operation is doctors' desire. With latest design and streamlined workflow, Apogee 3300 Neo will highly improve your routine efficiency.

### Auto fit

One button optimization function, not only adjusts TGC and B gain, but also base line, PRF and PW gain, realize the best 2D image and PW spectrum.



### Smarchive

The smart patient info management system enables edit, manage and transfer patients' information as well as images, so as to realize archive, analysis and review patients' information and make remote diagnosis available.



Smarchive screenshot

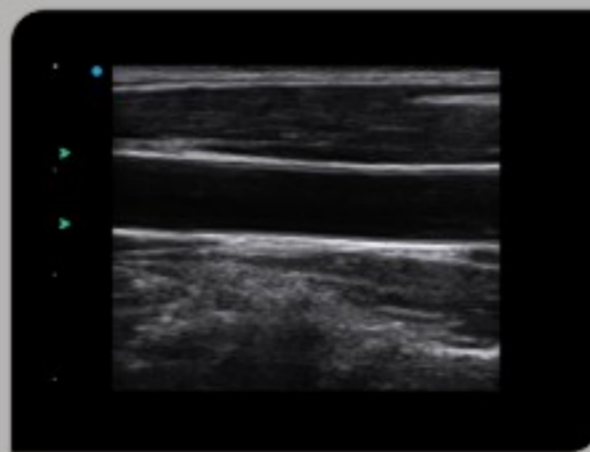
### Streamlined Control Panel



User-oriented control panel, independent probe and cable management, offer you streamlined workflow experience



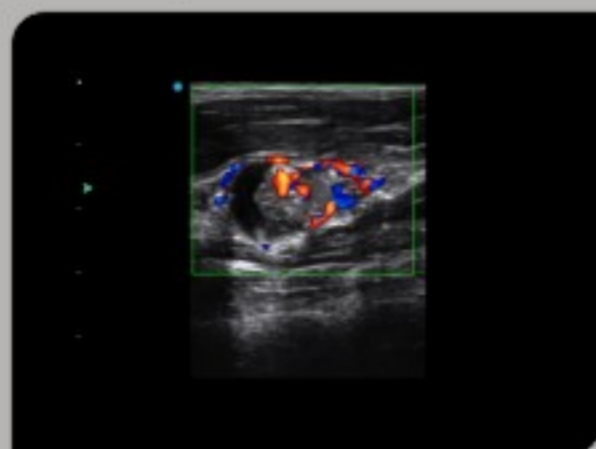
Myoma of uterus



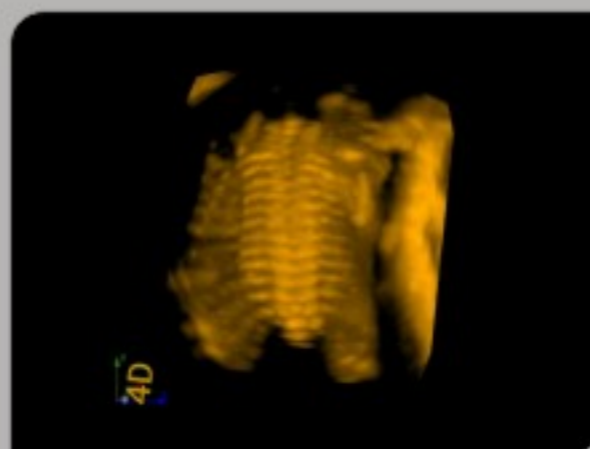
Carotid



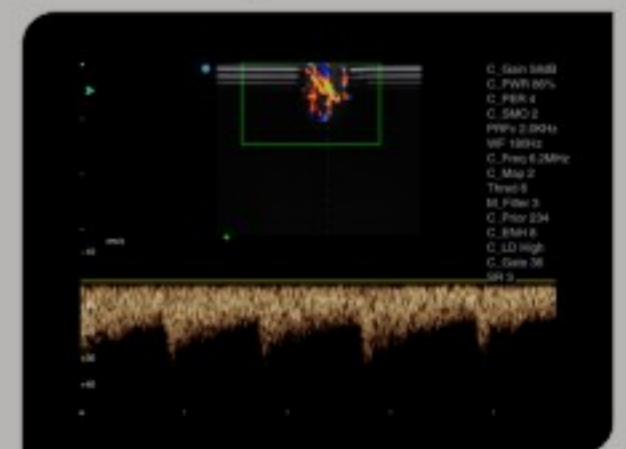
Kidney Color Flow



Lymphatic metastasis Color mode



Fetal spine



Finger artery PW mode



**Shantou Institute of Ultrasonic Instruments Co., Ltd.**

**HEADQUARTERS:**

Shantou Institute of Ultrasonic Instruments Co., Ltd.  
Add: No.77, Jinsha Road, Shantou 515041 Guangdong, China  
Tel: 86-754-8825 0150 Fax: 86-754-8825 1499  
E-mail: [siui@siui.com](mailto:siui@siui.com)

**HONG KONG OFFICE:**

Shantou Institute of Ultrasonic Instruments (HK) Co., Ltd.  
Add: Room 2101, Tung Chiu Commercial Center  
193 Lockhart Road, Wanchai, Hong Kong  
Tel: 852-2891 6722 Fax: 852-2891 6723

[www.siui.com](http://www.siui.com)

All rights reserved to SIUI 2016



SIUI



SIUI



SIUI

Apogee 3300 Neo/EN160411V1.0